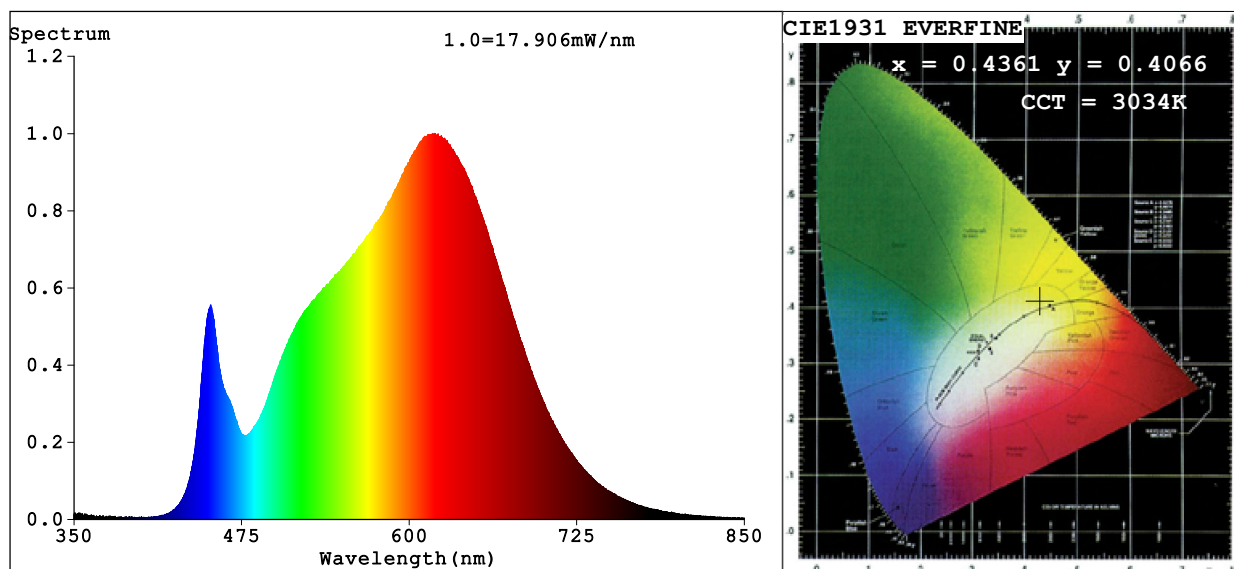


Spectrum Test Report



Color Parameters:

Chromaticity Coordinate: $x=0.4361$ $y=0.4066$ $u'=0.2490$ $v'=0.5222$
 CCT=3034K (Duv=0.0011) Dominant WL:Ld =582.3nm Purity=53.0%
 Ratio:R=24.0% G=73.2% B=2.8%; Peak WL:Lp=617.4nm FWHM=164.5nm
 Render Index:Ra=92.6 CRI=89.4 TM30:Rf=91 Rg=99
 R1 =93 R2 =96 R3 =97 R4 =93 R5 =92 R6 =95 R7 =93
 R8 =82 R9 =59 R10=89 R11=94 R12=78 R13=94 R14=98 R15=89

Photo Parameters:

Flux = 902.1 lm Eff. : 47.90 lm/W Fe = 3.090 W

Electrical parameters:

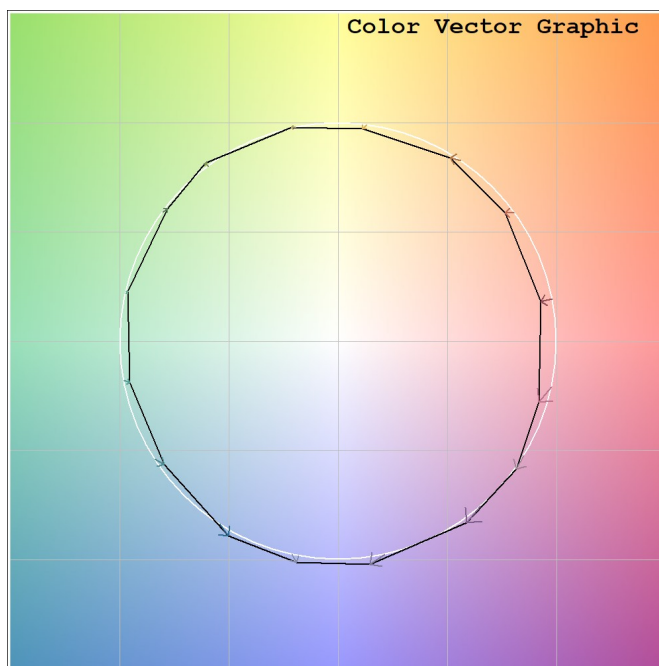
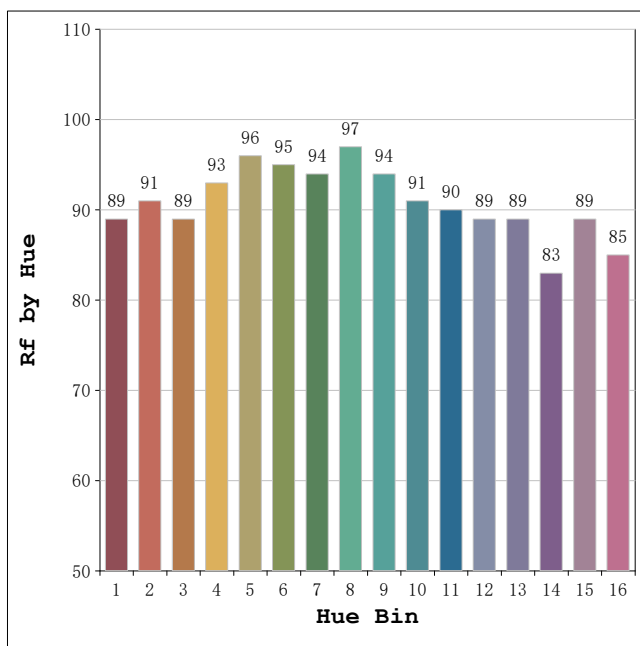
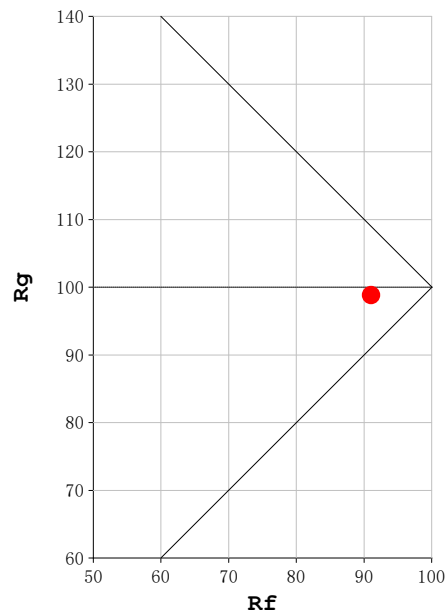
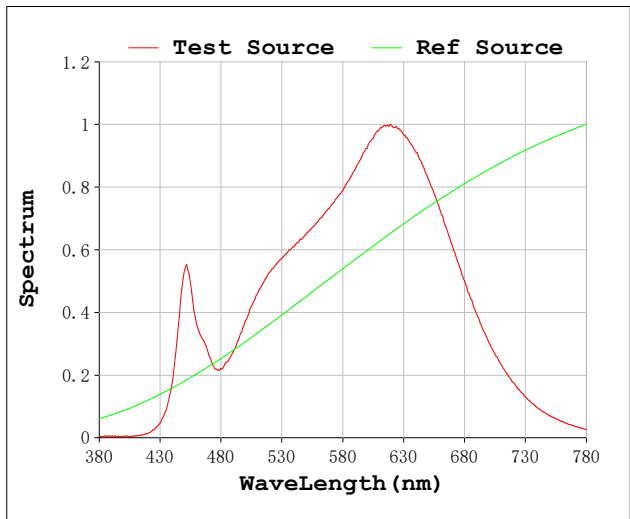
V = 230.07 V I = 0.09087 A P = 18.83 W PF = 0.9008

Status: Integral T = 1562 ms Ip = 49633 (76%)

Model:Spotia Zomm CTT Blanco
 Tester:Sergio Carneros
 Temperature:20Deg
 Manufacturer:Luz Negra

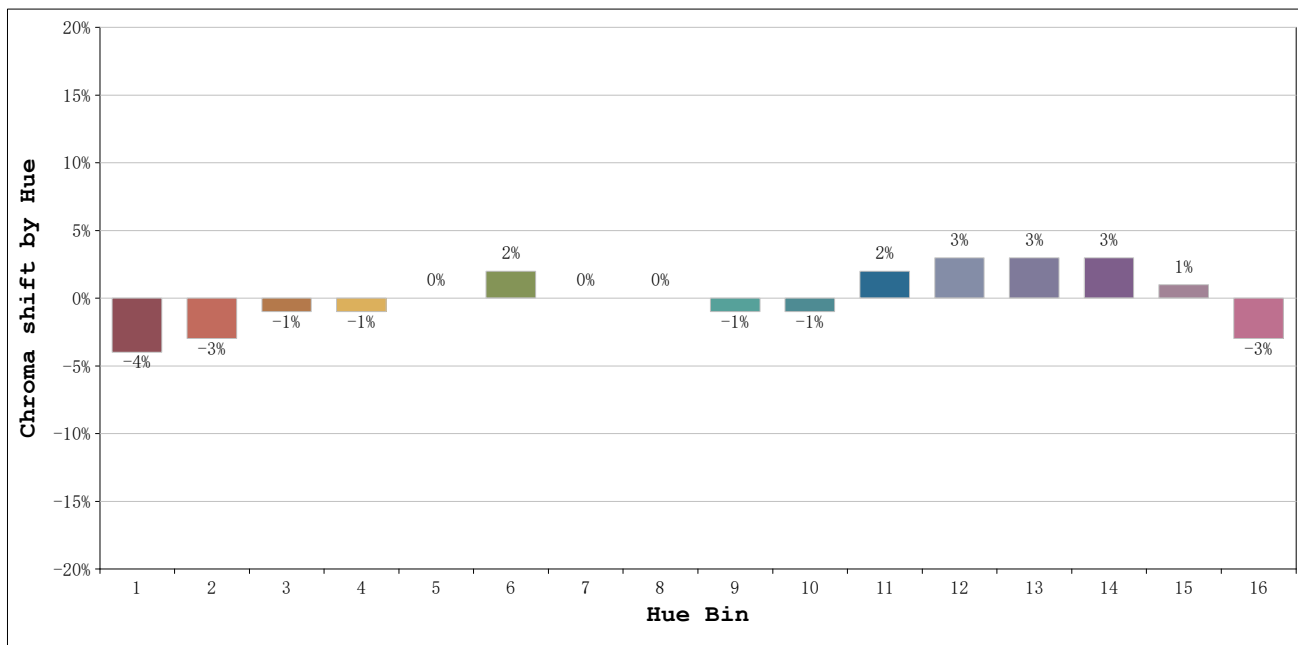
Number:3000k 20° Panal de abeja
 Date:2026-03-23 08:54:47
 Humidity:50%
 Remarks:1 unidad

Rf: 91 **CCT: 3034 K** **u': 0.2490**
Rg: 99 **Duv: 0.0011** **v': 0.5222**



Model:Spotia Zomm CTT Blanco
 Tester:Sergio Carneros
 Temperature:20Deg
 Manufacturer:Luz Negra

Number:3000k 20° Panal de abeja
 Date:2026-03-23 08:54:47
 Humidity:50%
 Remarks:1 unidad

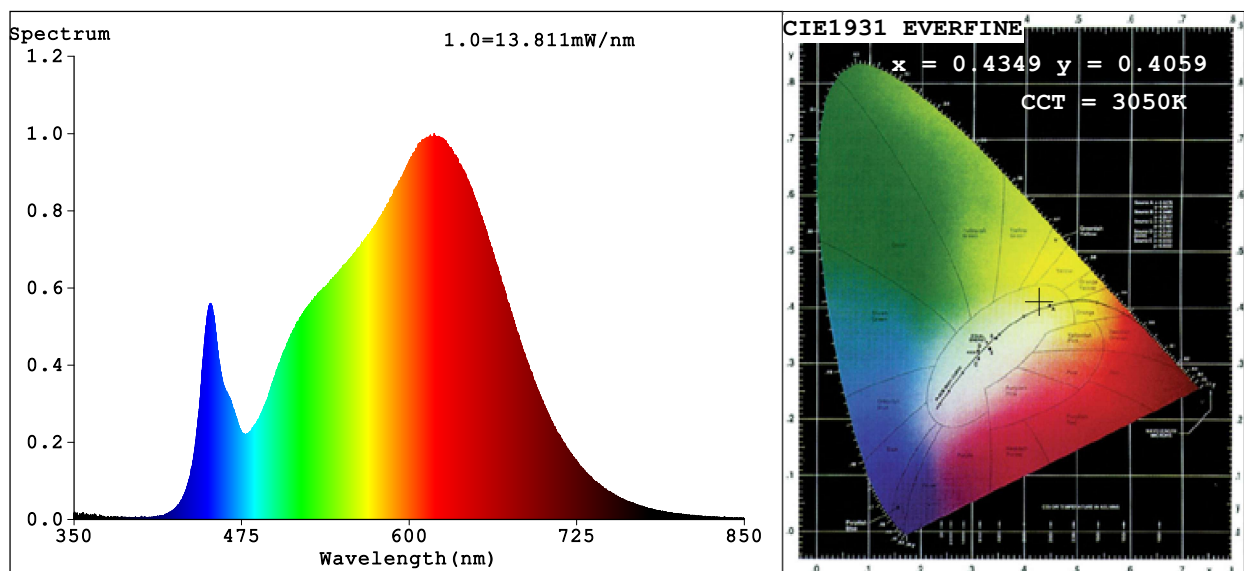


			Graphic shift(%)	
Hue Bin	Hue Angle	Rf	Chroma	Hue
1	0.0° - 22.5°	89	-4	0
2	22.5° - 45.0°	91	-3	2
3	45.0° - 67.5°	89	-1	5
4	67.5° - 90.0°	93	-1	1
5	90.0° - 112.5°	96	0	2
6	112.5° - 135.0°	95	2	1
7	135.0° - 157.5°	94	0	-2
8	157.5° - 180.0°	97	0	0
9	180.0° - 202.5°	94	-1	1
10	202.5° - 225.0°	91	-1	4
11	225.0° - 247.5°	90	2	6
12	247.5° - 270.0°	89	3	3
13	270.0° - 292.5°	89	3	-7
14	292.5° - 315.0°	83	3	-9
15	315.0° - 337.5°	89	1	-6
16	337.5° - 360.0°	85	-3	-7

Model:Spotia Zomm CTT Blanco
 Tester:Sergio Carneros
 Temperature:20Deg
 Manufacturer:Luz Negra

Number:3000k 20° Panal de abeja
 Date:2026-03-23 08:54:47
 Humidity:50%
 Remarks:1 unidad

Spectrum Test Report



Color Parameters:

Chromaticity Coordinate: $x=0.4349$ $y=0.4059$ $u'=0.2485$ $v'=0.5218$
 CCT=3050K (Duv=0.0010) Dominant WL:Ld =582.3nm Purity=52.4%
 Ratio:R=23.9% G=73.3% B=2.8%; Peak WL:Lp=618.7nm FWHM=164.2nm
 Render Index:Ra=92.6 CRI=89.4 TM30:Rf=91 Rg=99
 R1 =93 R2 =96 R3 =97 R4 =93 R5 =92 R6 =95 R7 =93
 R8 =82 R9 =58 R10=89 R11=94 R12=78 R13=94 R14=98 R15=89

Photo Parameters:

Flux = 696.0 lm Eff. : 37.19 lm/W Fe = 2.379 W

Electrical parameters:

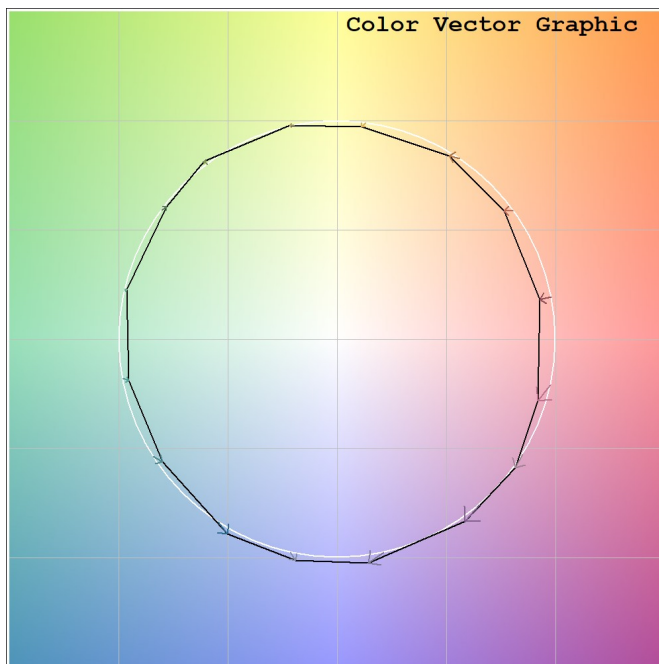
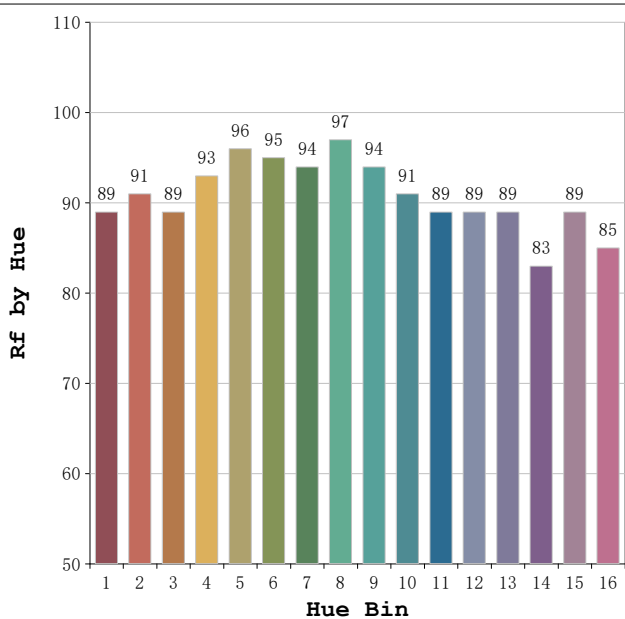
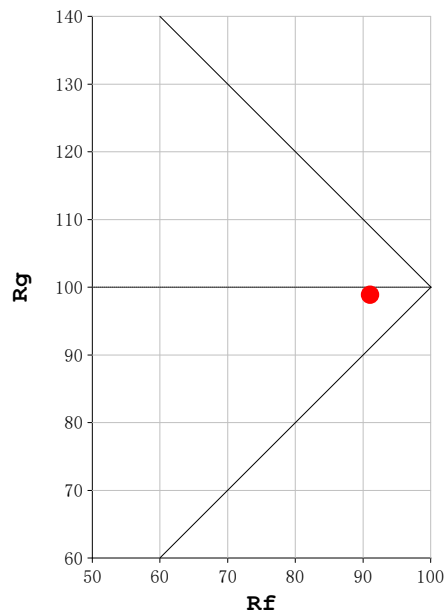
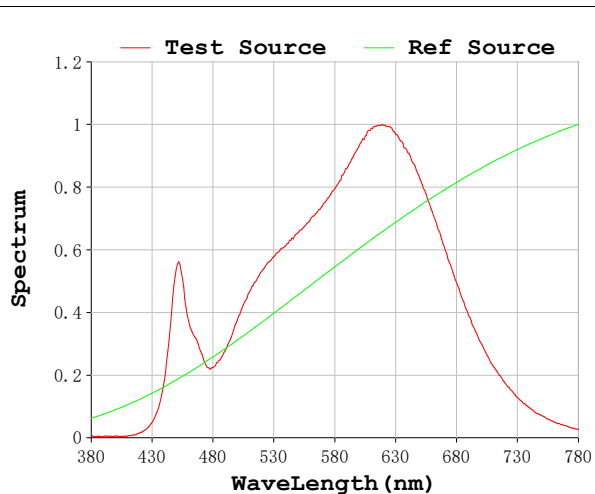
V = 230.09 V I = 0.09039 A P = 18.72 W PF = 0.9000

Status: Integral T = 1562 ms Ip = 38214 (58%)

Model:Spotia Zomm CTT Blanco
 Tester:Sergio Carneros
 Temperature:20Deg
 Manufacturer:Luz Negra

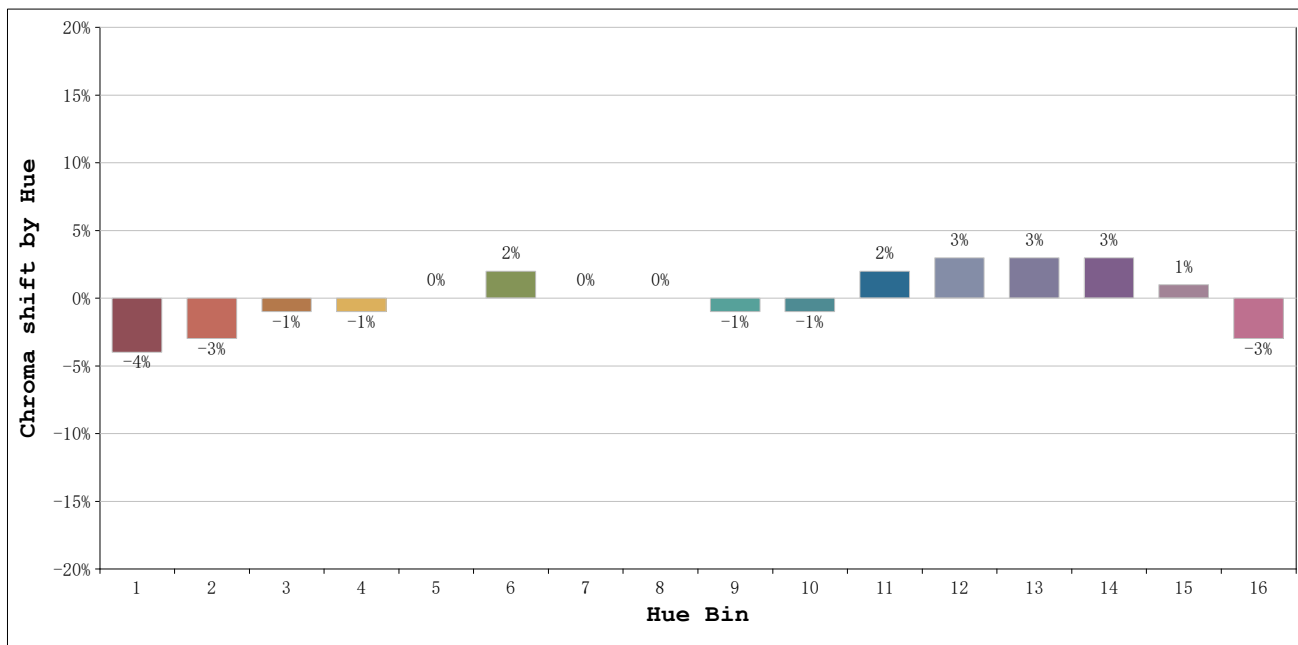
Number:3000k 60°Panal de abeja
 Date:2026-03-23 08:55:38
 Humidity:50%
 Remarks:1 unidad

Rf: 91 **CCT: 3050 K** **u': 0.2485**
Rg: 99 **Duv: 0.0010** **v': 0.5218**



Model:Spotia Zomm CTT Blanco
 Tester:Sergio Carneros
 Temperature:20Deg
 Manufacturer:Luz Negra

Number:3000k 60°Panal de abeja
 Date:2026-03-23 08:55:38
 Humidity:50%
 Remarks:1 unidad



			Graphic shift(%)	
Hue Bin	Hue Angle	Rf	Chroma	Hue
1	0.0° - 22.5°	89	-4	0
2	22.5° - 45.0°	91	-3	2
3	45.0° - 67.5°	89	-1	5
4	67.5° - 90.0°	93	-1	1
5	90.0° - 112.5°	96	0	2
6	112.5° - 135.0°	95	2	1
7	135.0° - 157.5°	94	0	-2
8	157.5° - 180.0°	97	0	0
9	180.0° - 202.5°	94	-1	1
10	202.5° - 225.0°	91	-1	4
11	225.0° - 247.5°	89	2	7
12	247.5° - 270.0°	89	3	3
13	270.0° - 292.5°	89	3	-7
14	292.5° - 315.0°	83	3	-9
15	315.0° - 337.5°	89	1	-6
16	337.5° - 360.0°	85	-3	-7

Model:Spotia Zomm CTT Blanco
 Tester:Sergio Carneros
 Temperature:20Deg
 Manufacturer:Luz Negra

Number:3000k 60°Panal de abeja
 Date:2026-03-23 08:55:38
 Humidity:50%
 Remarks:1 unidad